



St Mary's C of E (Aided) Primary School



NEWSLETTER

"A Christ-centred school with a child-centred curriculum through wisdom and love"
Jesus said, 'Love one another as I have loved you.' John 15 v 12

Telephone: 01798 872007

WB 9th December 2024

The post box is filling up with the Christmas cards and it was lovely to see Amelia's Nativity scene, which reminds us of The Christmas Story and the excitement of our retelling of it in EYFS and KS1! Well done, Amelia! We really are counting down to Christmas with our Advent wreath and all our Christmas celebrations.



Gifts for the King – Well done to UK and Thailand class for their performance of 'Gifts for a King'. The children sang with such enthusiasm and were able to retell the story to a packed hall. It was great to see them performing and see how they are flourishing in their classes. ADD PHOTOS



Church Links

UK and Thailand class – St Mary's Church for worship – UK and Thailand class went to meet with Fr Paul today at the church. They talked about Advent and Mary.



Reflection - This week's reflection, thank you so much to Mrs Smith for putting this together for our school community. [Advent 2024](#)

Learning

Ancient Greece - China Class have produced some fantastic posters as part of their English work. They have explored Greek vases and Greek masks as part of their Art.



Writing for purpose - Did The Grinch spoil Christmas at St Mary's? This week, there has been an unexpected sighting in school! The children have spotted the Grinch in the corridors, carrying armfuls of presents and trying to steal the school Christmas tree! Year 6 have been tasked with solving this mystery and will be describing 'How the Grinch Stole Christmas' in their final piece of writing - instructions - for this term.



News

Choir - The choir have been out to sing at Hillside Lodge and The Anchorage this week. It was lovely to be able to share some Christmas cheer and for the children to have an opportunity to perform outside of school!



Things to know...

Parking – We have sent out a letter regarding parking following some comments on social media. Please can I ask that you refer all concerns to www.operationcrackdown.co.uk

Chartwells' meal choices – Please could we ask that when ordering your child's meal choice, you sit down together and choose their preferred option. We have had a number of children refusing to eat what was ordered for them and, as a school, we only receive what you have ordered to reduce food waste.

January Cut off Dates

Thur 26/12 for w/c 06/01
Thur 02/01 for w/c 13/01
Thur 09/01 for w/c 20/01
Thur 16/01 w/c 27/01



February Cut off Dates

Thur 23/01 for w/c 03/02
Thur 30/01 for w/c 10/02

HALF TERM

The Chartwells catering team would like to wish everyone a Merry Christmas, and very much look forward to seeing all the children again in the dining hall in the New Year.

You can order now for January 2025 as we are sure you will all be very busy organising Christmas.

Please be advised that due to an error by the telephone line operator, the Chartwells West Sussex office telephone number(s) has changed with immediate effect.

The new telephone number is **01243 774175**



Dates for your diary – AUTUMN TERM

Mon 16th Dec - India/Italy Christmas Production – 'Cock-a-doodle Christmas!' 5pm **and Tue 17th Dec** –2pm and 5pm

Wed 18th Dec – Chartwell's Christmas lunch

Wed 18th Dec - PTA Christmas Disco 5pm – 6pm EYFS/KS1 and 6.15pm – 7.30pm KS2 £1.50 entry

Thur 19th Dec – Pantomime in school – Jack and the Beanstalk

Fri 20th Dec – Class Christmas Parties PM

Fri 20th Dec – Last day of the Autumn Term – Christmas Jumper day for all – normal school uniform but with a Christmas jumper - no contribution needed

Celebrations

Kindness shield – Callie (Ind) has been given the kindness shield for December. The entry says, 'Callie is such a kind, caring and thoughtful young lady. She is always looking after others and she always shows compassion. Whenever there is a problem she is always there to help others. Callie is always smiling and she cheers everyone up. Keep being the shining light that you are!'



Class Assemblies – All of our class assemblies have taken place this term and it has been brilliant to be able to share so much learning. Thank you to all the parents that attended and shared this with the classes.



Vine leaves – **Hettie (SL)** and **Andrew (SL)** - Creativity - both children came up with imaginative and well-choreographed Broadway dances during our P.E lesson. **Noah A (NZ)** - Compassion – had so much patience helping another child in PE. **George F (Jap)** – Generosity - for giving a large donation to the EWA craft and cake sale last week, and for buying a child in another class a cake as she didn't have any money. **Lucy C (SA)** - Perseverance -for trying so hard with her reading. **Rowan F (Ita)** - Wisdom - for taking on challenges in the classroom and working hard to solve them! **Bea K (SA)** – Wisdom - as you mastered our new learning about comparing fractions brilliantly this week! **Lewis H (SA)** - Compassion - you always take the time to check in with a classmate and say something kind and encouraging. **Ruairi F (USA)** - Perseverance - with reading. He has completed and passed 32 AR quizzes this term. **Mattie P (USA)** - Perseverance - She consistently tries her very best in all subjects and puts maximum effort into all her work. **Freddie O (USA)** - Perseverance - with all his school work. He consistently tries his best in all subjects and puts in a great deal of effort in his work.

Achievements –



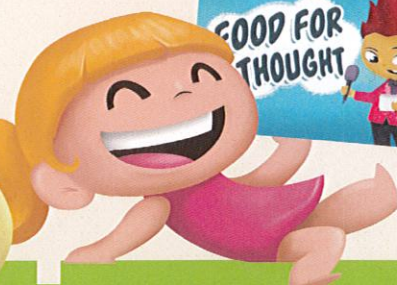
Staying Healthy

Illness

Feelings

Getting Help

A fun and interactive resource
for learning about health



Games

Activities

Quizzes

Parents and Carers!

As well as enjoying the content with your child, you can
get advice on supporting their health and wellbeing.



www.healthforkids.co.uk

Follow us:  [scftwestsussexschoolnurses](https://www.instagram.com/scftwestsussexschoolnurses)



Text your School Nurse team for confidential advice and support:

07312 277011

Disclaimer: We may need to inform someone if we are concerned about your safety but we would usually speak to you first. Your messages are stored securely and can only be accessed by other authorised health care professionals who follow the same strict confidentiality rules. We aim to reply to your message within one working day and you should get an immediate message back from us to confirm we have received your text. Texts will only be seen Monday to Friday from 9 am - 4.30 pm (excluding bank holidays and weekends). If you need help before you hear back from us, please contact your GP, nearest walk-in centre or dial 111. In an emergency please dial 999. Unfortunately, our text number does not receive voice calls or MMS picture messages. We support messaging from UK mobile numbers only (which does not include messages sent from landlines, international mobile numbers and some number masking mobile apps). To opt-out of receiving messages from a healthcare professional, please text 'STOP' to our number. Messages are charged at your usual rates.

American **ALL STARS**

Thursday 16th January 2025

MAINS

Burger and Chips
Mac & Cheese

SIDES

Sweetcorn or Baked Beans
Seasonal Salad

DESSERT

Frosted Vanilla Celebration Cake

Order via [ParentPay](#) no later than Thursday 2nd January 2025



**ALL-TIME GREATS FROM THE
UNITED STATES**





SPORTXPLORE SOCCER CAMPS!!

WE ARE RUNNING TWO CAMPS
ACROSS THE CHRISTMAS
HOLIDAYS,
COME AND JOIN THE FUN. SEE
ALL THE DETAILS BELOW:

WHAT DO WE DO?

- ✓ SKILLS & BALL TECHNIQUES
- ✓ FUN GAMES
- ✓ MATCHES AND COMPETITIONS
- ✓ HAVE LOTS OF FUN!



CHRISTMAS CAMP

23RD OF DECEMBER
4-12 YEARS OLD
09:45 - 15:00

£25 FOR THE DAY!

NEW YEAR CAMP

2ND + 3RD OF JANUARY
4-12 YEARS OLD
09:45 - 15:00

£25 FOR 1 DAY, £40 FOR 2!

ST MARY'S COFE AIDED PRIMARY SCHOOL
LINK LANE, PULBOROUGH, WEST SUSSEX, RH20 2AN.

BOOK NOW
WWW.SPORTXPLORE.ORG/BOOK

MORE INFORMATION
0330 043 5422 INFO@SPORTXPLORE.ORG SPORTXPLORE.LTD



RECYCLE YOUR TREE

Rotary
Storrington &
Pulborough District



C
**Chestnut
Tree House**
{Children's
Hospice Care}



TO REGISTER"

SCAN HERE!

www.just-helping.org.uk/register-tree

- Registration Opens 15th Nov 2024
- Registration Closes 7th Jan 2025
- Collecting 11-14th January 2025

giftaid it



Registered with
**FUNDRAISING
REGULATOR**

After costs, 50% of the monies raised will go to Chestnut Tree House. The remaining 50% will be distributed by Storrington and Pulborough District Rotary Club to many worthy causes in the local community.

JustHelping supports volunteers, businesses, and charities to contribute to their community and the environment. Our national Christmas tree collection raises essential funds for charities in the local community.

