

ST MARY'S C OF E (AIDED) PRIMARY SCHOOL

'A Christ-centred school with a child-centred curriculum'



NEWSLETTER

Week beginning 27th April 2026

Message from Mrs Copus



It was great to compare the London Marathon against our very own mini-marathon around the Rec - thank you to the PTA for making this happen and allowing the school community to have so much fun. The sun continues to shine and we are looking forward to the Year 5 residential next week!

Living Church Links

We are blessed with St Mary's church and our links with them. In worship this week, Mr Holloway shared images from the church and the history behind this. We learnt such a lot about our church - do ask the children.



News



Attendance

This week's attendance was 94.3% - our target is 96.4%

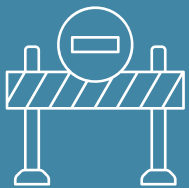
94.3%

Staffing

Mrs Hatcher will be leaving us at the end of the summer term, having been offered a promotion to the role of Headteacher at another school. While we are naturally very sad to be losing her from our school family, we are absolutely thrilled for her. We will begin the process of recruiting new staff to replace her over the coming weeks and months and we will keep you updated as appropriate.

Church Hill

Please be aware that the works on Church Hill have been extended and it will therefore remain closed until 6th May. This is having implications on increased traffic and parking restrictions around the school. Please be extra vigilant and mindful. - as always, parking is available at the Sports and Social Club across the recreation ground.



Staff Car Park

Please could we request that no one parks in the entrance to the school drive / staff car park at any time. If you are late you will need to park elsewhere, walk your child through the car park and come to the office to sign them in. **It is not safe for children to walk through the car park alone.** Thank you for your cooperation with this.

SEND Support for Parents

We are always keen to share information for families about a range of services and resources that may help and support those with additional needs.

[Autism Central](#) – a free NHS funded national service providing autism support for parents and families.

[Charlie Waller Trust](#) – offers a range of courses for families on a range of issues that families may encounter.

[West Sussex Mind](#) – offers support if you're worried about a child or young person's mental health and wellbeing

News

PTA Mini Marathon



Thank you to the PTA for organising the mini marathons last Saturday. It was so well attended and there was a brilliant atmosphere.



A special mention to Isabella (Mex) who opted to help to pace the KS1 race before completing her own race and Jayden (SA) who completed 7 or 8 laps (which was over 5k!)



Tesco Pulborough

The lovely team at Tesco Pulborough are taking part in the 'Purple Bert' initiative - when children visit the store they can have free fruit. Please see instore and take advantage of this great offer.

Harvest Fayre

We are starting to prepare for the Harvest Fayre that will be returning this year. In September, there will be some competitions running for the children to enter so you have plenty of advanced notice to start thinking about what you might be able to grow in readiness for these categories.

There will be two age groups: 5-7 and 8-11

Children's Gardening Competition Categories:

- Biggest Pumpkin
- Longest Carrot
- Funniest Shaped Vegetable
- Best Harvest Basket Display
- Most Creative Vegetable Sculpture



Children's Cooking Competition Categories:

- Best Decorated Biscuit - to be done on site, biscuits and decorating materials supplied by sponsor
- Best Homemade Biscuit
- Best Healthy Treat

Parent Questionnaire

Thank you to all the parents who completed the questionnaire during our recent parents' evenings. We were delighted to receive such positive feedback about how St Mary's is run and we're very pleased to know that things are working well for the vast majority of our pupils and families.

Understanding Bullying: Facts & Myths

Recently, bullying in schools has been highlighted as a national concern and we understand that parents may feel anxious about their children's experiences at school. We want to clarify what bullying is—and what it is not.

What bullying is: Bullying is repeated, intentional behaviour that aims to hurt, intimidate or dominate another person. It can take many forms, including verbal, physical, social or online and it often involves a power imbalance between the person being targeted and the person exhibiting the behaviour.

What bullying is not: Not every unkind word, disagreement or one-off conflict constitutes bullying. Children are learning how to navigate friendships, test boundaries and manage emotions. Occasional misunderstandings or mistakes are a normal part of growing up.

At St Mary's, we place great importance on teaching kindness, respect and our core values. Our staff work closely with children to model positive behaviours, encourage empathy and support strong, healthy relationships.

While occasional unkindness or errors of judgment can occur, we are committed to addressing issues promptly. Any concerns are handled according to our robust behaviour policy, ensuring all children feel safe, supported and heard and this was reflected in our recent parent questionnaire.

We encourage parents and carers to communicate immediately with their child's class teacher if they have any concerns, so together we can work together to eradicate any issues. Bullying will not be tolerated.



Things to know...

Meal Ordering

Please could we ask that when ordering your child's meal choice, you sit down together and choose their preferred option. We have had a number of children refusing to eat what was ordered for them and, as a school, we only receive what you have ordered to reduce food waste.

May cut off dates

Thurs 07/05 for w/c 18/05
HALF TERM

Thurs 21/05 for w/c 01/06

Dates for your diary

Mon 4th May - Bank Holiday Monday - school closed

Weds 6th - Fri 8th May - Year 5 Cobnor Residential trip

Weds 6th May - Year 4 Multiplication Test chat for parents 3.30pm

Mon 11th May - Year 6 SATS week

Fri 15th May - Non-uniform day for school summer fayre

Mon 18th May - Fri 22nd May - Year 6 PGL Bethany House residential

Thurs 21st May - New Parents (Sept 2026) meeting - 7pm

Mon 25th May - HALF TERM WEEK



Celebration Assemblies

These will be at 9am for this term and it is so valuable for parents to share the learning that has been going on.

20th May - New Zealand 21st May - China

4th June - Australia 11th June - Italy

18th June - Sierra Leone 24th June - Mexico

25th June - USA 2nd July - Thailand

8th July - India 9th July - UK

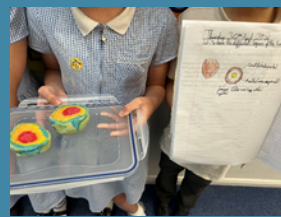
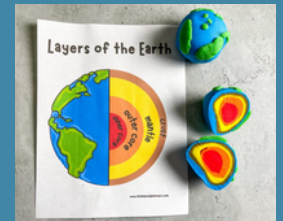
22nd July - Japan & SA 9.30am



Curriculum

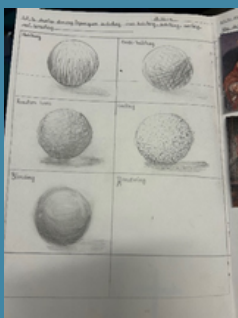
Science & Geography

USA, SL & NZ Classes have been learning about the Earth and its layers. The children used materials like playdough to make the Earth and see the layers.- inner core, outer core, mantle and crust. They presented this in their Geography books too



Art

China Class completed the first half of their coral bleaching art project. We used materials such as plastic straws, old pens, tin foil, forks, spoons and pipe cleaners to carve, sculpt and indent the clay; each creating a unique piece of coral for our reef. Once they are dry, we will be painting them to reflect the devastating effects of coral bleaching.



They have also been working hard on other art projects - look at these incredible pencil drawings!



Curriculum

Forest School



After reading Oliver's Vegetables this week **UK Class** made vegetable kebabs at forest school today. We all tried something new, just like Oliver!



The Big River Watch

On Monday, we welcomed Cathy Oldfield from the West Sussex Rivers Trust, who introduced us to the Big River Watch – a watery version of the Big Bird Watch! This citizen science project invites families to spend just 15 minutes by a local river, observing wildlife, water flow and any signs of pollution using a free app. The data collected helps build an important picture of river health across the UK and Ireland. We encourage all families to download the app and take part together. Here is a link to download the app: [The Big River Watch | The Rivers Trust](#)
Children who complete a survey and share it with school will earn 50 Dojo points!





Sport



Athletics

What a final this was! Our children went to represent our locality in the Sussex Finals and they really did perform with enthusiasm and resilience. Thank you to Mrs Gowland for taking them.



Football - local interest

One of our parents is exploring the possibility of starting an Under-8s football team next season for children in Years 1 and 2.

At this stage, he would like to gauge interest from families to help him determine whether there is enough enthusiasm to move forward.

If your child would be interested in taking part, please contact Simon on 07810 141204.



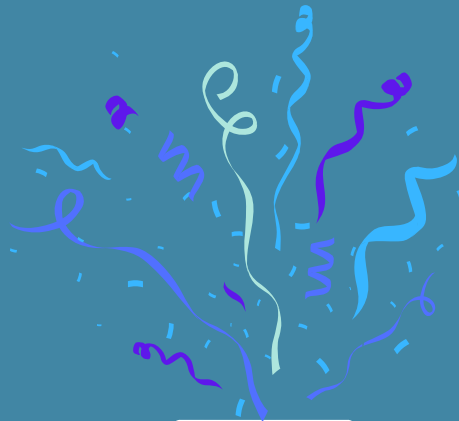


Celebrations

Loving House Cup

The children have collected Class Dojo points all week and this week's winners are
- St Mary's (Blue Team).

Dojo's can be awarded for reading at home, kindness, politeness, upholding our school values, supporting our Christian ethos and extra curricular contributions to our school.



Celebrations



Vine Leaves

Finley (Chi) - Service - for sorting out the residential booklets. **Rupert (Chi) - Service** - for being helpful in China class. **Zara (Chi) - Kindness** - for letting another child use her glasses case when they were worried about keeping theirs safe at the pool. **Mason (Chi) and Keeyan (Chi) - Wisdom** - for working very hard during our maths unit on time and seeing the results. **Louisiana (Chi) and Hettie (Chi) - Perseverance** - for working tirelessly to improve their MTC practice scores. **Theo (Ita) - Service and Kindness** - for helping one of the staff members from Little Explorers move their wagon. **Harrison (Mex) - Service** - for exceptional knowledge in science and being able to explain new learning clearly to the class. **Maryanne (Jap) - Kindness** - for showing empathy to a fellow student. **Olivia (SL) - Wisdom** - for making an exceptional start to her newspaper report about Mount Etna. **Bertie (Ind) - Friendship** - for always thinking of others before himself and making sure nobody is forgotten or left out.

Achievements



**Bertie (Aus) -
completed Stage 3
swimming**



**Jesse (Mex) - had a
great weekend racing
both on tarmac and
dirt tracks**



Celebrations

Achievements



Ada (USA) - swam 78 lengths to raise money to send 3 local Scouts to a jamboree in Poland!



Hettie (Chi) - swam 100 lengths to raise money to send 3 local Scouts to a jamboree in Poland!



Poppy (Jap) - has been invited to the Sussex U25 County Trials this weekend - good luck!



Luna (NZ) - received Player of the Week at rugby and Level 3 gymnastics



If you are interested in
working for Chartwells,
term time contract and school
friendly hours.

Drop us an email at
westsussex@chartwells.co.uk
ID will be required for an enhanced
DBS and Right to Work UK.



The Anchorage Community Dementia Café Launch



We are pleased to announce the launch of The Anchorage's first ever Community Dementia Café

Our first session will include dementia-friendly activities and a special musical guest in an inclusive, welcoming and supportive environment.

enquiries@anchoragecarehome.co.uk
01798 872 779

**The Meadows Room
Pulborough Village Hall**

**Tuesday 12th May
10:30am – 12:00pm**



This initiative is delivered in partnership with PDCCA and is open to those living with dementia, their carers, and anyone seeking support or signposting to relevant services.

PDCCA
PULBOROUGH & DISTRICT
COMMUNITY CARE ASSOCIATION

COME AND JOIN US IN THE
FINEST BARN* IN SUSSEX

FOR A

Barn Dance

SAT 9th MAY

7pm to 10.30pm

WITH LIVE MUSIC FROM THE

Brighton Ceilidh Collective

TICKETS: Adult: £20 Child: £10


Includes Posh Ploughmans

Sullington Tithe Barn,
Sullington Manor Farm,
Sullington Lane, RH20 4AE

In aid of www.friendsofpulboroughparishchurch.org



Friends
OF PULBOROUGH PARISH CHURCH

Get Tickets 



The Friends of Pulborough Parish Church operates under the umbrella of The Parochial Church Council of the Ecclesiastical Parish of Pulborough which is a charity registered under number 1132137

* Sullington tithe barn was recorded as the 'finest' barn in Sussex, by acclaimed architectural historian Nicklaus Pevsner