

ST MARY'S C OF E (AIDED) PRIMARY SCHOOL

'A Christ-centred school with a child-centred curriculum'



Week beginning 12th January 2026

Message from Mrs Copus



The week has been busy with drama workshops, outdoor learning and sporting events. The rain hasn't stopped play and we are looking forward to next week!



Living Church Links

Christian values – We are thinking about humility, service and forgiveness this half term. Our whole school worship this week was about Epiphany. This week we thought about Humility in our worship. We thought about walking in someone else's footsteps. The Bible talks about Jesus washing the disciple's feet and Mrs Copus acted this out! The children went away thinking about putting someone else before themselves – Ted in China class has already put this into action.





News



Attendance

This weeks attendance was 94.4% - our target is 96.4%

94.4%

Parent Tea & Chat Sessions

Reading - Miss Callender is running a reading tea and chat on Tuesday 27th January at 9am. Come and find out more about reading in school, book types and how to help your child with reading.

TALK!

CHAT♥



Maths - Miss Heasman is also running a session about visual images in maths and sharing our calculation policy on Mon 9th February at 2.30pm.

Please let the office staff know if you would like to attend either of these sessions.

PE Kits

Many thanks to those that have ensured that their children have worn the correct PE kit this week. As a reminder that every child must have a named, complete PE kit including, at minimum -

- A pair of plain navy-blue (unbranded) shorts, leggings or fleece jogging bottoms
- A plain (unbranded) or logo white t-shirt
- Appropriate footwear for sport (sensible trainers or plimsolls)
- A plain, unbranded or school jumper / fleece / navy blue hoodie can also be worn when outside or during cold weather.



Football and other replica kit, branded sportswear / tracksuits, 'fashion' footwear etc are not suitable or appropriate for PE. PE days are not dress down / non-school uniform days and appropriate clothing must be worn.



Things to know...

Meal Ordering

Please could we ask that when ordering your child's meal choice, you sit down together and choose their preferred option. We have had a number of children refusing to eat what was ordered for them and, as a school, we only receive what you have ordered to reduce food waste.

Feb cut off dates

Thurs 22/01 for w/c 02/02

Thurs 29/01 for w/c 09/02

HALF TERM

Dates for your diary

Spring Term 2026



Mon 19th January – SPLASH worship

Mon 19th January – Second hand uniform sale – front entrance – 3.15pm – 3.45pm

Tue 20th January – Meet the Teacher for Mexico Class

Tue 20th January – Explorer Day for SA and Japan class (dress up)

Weds 21st January – Talented Athlete Y5/6

Thurs 28th January – Hawking About Y3/4

Fri 13th February – INSET Day

Mon 16th February – Fri 20th February – HALF TERM

Celebration Assemblies

China - 28th Jan USA - 29th Jan

Thailand - 4th February UK - 5th February

New Zealand - 11th Feb Japan - 12th Feb

Sierra Leone - 25th February Italy - 26th February

India - 11th Mar Mexico - 12th Mar

Australia - 18th Mar South Africa - 19th Mar



Curriculum



Learning

PE

Year 5 and Year 6 have been thinking about their Gymnastics skills. They have been creating balances and using muscle tension to do this.

Music

China and Mexico class have been learning the ukulele. You can see Mexico class playing ukulele here and they were playing C major in their practise session. We are impressed with their musical skills and perseverance.



Drama

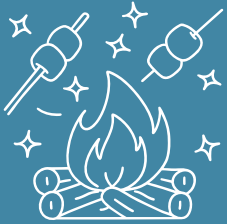
We had Perform come to visit us today. The children were transported to a magical toy shop that was closed. A villain was at the toy shop and the children had to rescue the toys and recapture the toy shop.





Curriculum

Learning Forest School



Today the children in **UK Class** spent time making Speedy Bird Feeders ready to participate in the RSPB Big Bird Watch. They also toasted marshmallows on the fire and had great fun in the mud kitchen!



Sport



Tag Rugby

Well done to the children that attended the Tag Rugby festival at The Weald this week. Despite a last minute switch to the astro courts due to bad weather, they played with grit and determination and were able to really apply their skills to a game situation.



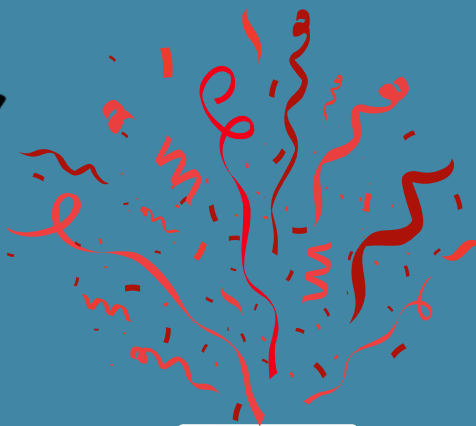


Celebrations

Loving House Cup

The children have collected Class Dojo points all week and this week's winners are - St Matthew's (Red Team).

Dojo's can be awarded for reading at home, kindness, politeness, upholding our school values, supporting our Christian ethos and extra curricular contributions to our school.





Celebrations



Vine Leaves

Lyla and Orla (NZ) - Service - for litter picking around Pulborough. Peri (Aus) - Perseverance - for coming back to school for the Spring term working very hard. Lewis (Aus) - Service - for being kind and helpful towards all adults and children. He is always keen to support in learning and help when he can. Oakley (Aus) - Friendship - for showing true kindness to his classmates. He shares his things and has lent gloves to others for forest school. Freddie (Mex) - Compassion - for having a very kind heart and being quick to support his classmates if they are upset. Darcey and Molly (Ita) - Friendship - for coming alongside a friend in need. Isabelle (Ita) - Perseverance - for putting her best efforts into her writing and making good progress! Maryanne (Jap) - Perseverance - for persevering with fractions this week to make sure she CAN DO IT! Macie, Sid, Ben F, Edward, Sienna (USA) - Perseverance - for producing excellent research on our new Science topic, "Animals including Humans" on the human skeleton and the different bones. They all found out extra information.

Achievements

Sophia (Ind) -
passed Stage 3
swimming



Ada (USA) -
came 1st in pairs
at her dance
competition





**Tuesday
27th January 2026
at 3pm
Pop up tasting event**

Come to The Anchorage Care Home in Pulborough and meet Rachel from Health & Independent Living Support (HILS), Megan and Hayley from Age UK West Sussex, Brighton & Hove and Community Engagement Manager, Kate, from The Anchorage.



The Anchorage is excited to partner with **HILS** and **Age UK** to support our local community.

Our team and residents are looking forward to meeting you and warmly inviting you to our home for some food tasting and community support. Spaces are limited, so be sure to reserve your spot today.

RSVP TODAY

01798 872 779

admin@anchoragecarehome.co.uk

 **The Anchorage**
CARE HOME • PULBOROUGH

The Anchorage Care Home
Coombelands Lane
Pulborough, West Sussex
RH20 1AG

HEROES



WELCOME

**COULD YOU
RESCUE A
DOG?**

CHANNEL 4'S
the **Dog House**
IS BACK!



APPLY NOW



C4THEDOGHOUSE TAKEPART.CO.UK