



*Welcome to New Zealand Class*



 2024

*Mrs Parrish-Vick*

# Our Topics

Autumn 1	Rumble in the Jungle
Autumn 2	Roadtrip USA
Spring 1	Temple, tombs and treasures.
Spring 2	Misty mountain, winding river.
Summer 1	Rumbles.
Summer 2	Vikings.

# Typical NZ Class Timetable

Year 3 New Zealand – Week 2

W.C 16.09.24

	REGIST ER 15 MINS MAX	20 MIN S	9.00 – 9.45 OR 1HR	9.45-10.30 OR 15-30MINS	10.2 5- 10.4 0	10.40 - 11.45 OR 1HR	11.45 12.15 OR 15-30MINS	12.15 - 1.00	1.00 - 2:00 OR 50-60MINS		2:00 – 2.45 OR 45MINS (15 Mins prep home 2.55)	
MONDAY	SODA: Spellings	C l a s s   W o r s h i p	ENGLISH			B	MATHS		L	SWIMMING	SWIMMING	SPELLINGS
TUESDAY	SODA: Flash Tables  TA Precision teaching English/ 1:1 Reading		ENGLISH			R	MATHS		U	HANDWRITING	SCIENCE	RHE
WEDNESDAY	SODA: <del>Pobble</del> TA Precision teaching English/ 1:1 Reading		ENGLISH			E	MATHS		N	HANDWRITING	RE	MUSIC
THURSDAY	SODA: <del>Quickulation</del> & TA Precision teaching English/ 1:1 Reading		ENGLISH star reader assessment TTR			E	MATHS	READING	N	SPANISH	PE	
FRIDAY	SODA: Spellings Ta precision teaching English/ 1:1 reading		GR		GR	K	GR	MATHS	H	HANDWRITING	GEOGRAPHY	ART

## English -

1<sup>st</sup> half term:

- Letter writing - formal persuasive writing.

2<sup>nd</sup> half term:

## Maths -

1<sup>st</sup> half term:

- Place Value
- Addition and Subtraction

2<sup>nd</sup> half term:

- Addition and Subtraction
- Multiplication and Division

## Science -

1<sup>st</sup> half term:

All living things.

2<sup>nd</sup> half term:

- Forces and Magnets
  - Poles - attract and repel
  - Pushing and pulling
  - Investigations

<p>PE -</p> <p>1<sup>st</sup> half term:</p> <ul style="list-style-type: none"> <li>• Swimming - Tuesday</li> <li>• Frisbee - Friday</li> </ul> <p>2<sup>nd</sup> half term:</p> <ul style="list-style-type: none"> <li>• Dance - Wednesday</li> <li>• Netball - Friday</li> </ul>	<p>Spanish -</p> <p>The children will be taught Spanish each week by Miss Bell.</p> <ul style="list-style-type: none"> <li>• Greetings</li> <li>• numbers up to 12,</li> <li>• naming colours</li> <li>• finding out about Christmas in Spain.</li> </ul>	<p>History -</p> <p>2<sup>nd</sup> half term:</p>
<p>Geography -</p> <p>1<sup>st</sup> half term:</p> <p>Rumble in the jungle</p> <ul style="list-style-type: none"> <li>• Rainforests</li> <li>• Climate</li> <li>• Biodiversity</li> </ul>	<p>Art -</p> <p>1<sup>st</sup> half term:</p> <ul style="list-style-type: none"> <li>• 'Henry Rousseau'</li> </ul>	<p>D&amp;T -</p> <p>2<sup>nd</sup> half term:</p>

## RE -

- 1<sup>st</sup> half term:
- Islam - submission
- 2<sup>nd</sup> half term:
- Christianity - Incarnation

## Music -

- 1<sup>st</sup> half term:
- We will be learning to play the glockenspiel
- 2<sup>nd</sup> half term:
- Singing.

## Computing -

- 1<sup>st</sup> half term:
- Online safety
- 2<sup>nd</sup> half term:
- Coding

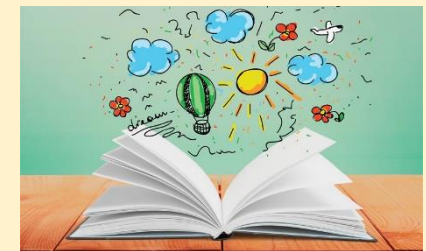
## RHE -

- 1<sup>st</sup> half term:
- Democracy
- 2<sup>nd</sup> half term:
- Bullying.

Please note that all RHE lessons follow our curriculum and are age-appropriate

# Routines

Times Tables	Spellings	Reading Logs
<p>There will be an increased focus on times tables in Year 3.</p> <p>We will be testing the children each week on their understanding and will also be participating in daily Maths fluency lessons, called Maths Flash.</p> <p>There are lots of ways to practise times tables at home.</p> <ul style="list-style-type: none"><li>• TT Rockstars.</li><li>• Online games - Bowling, Angry Andy Must Have Candy, Caterpillar carnage</li></ul>	<p>Spellings will be handed out on a Monday and will be tested the following Monday.</p> <p>All spellings are adapted to suit the need of each individual child, providing familiarity and challenge.</p>	<p>Reading logs will be collected in and checked everyday.</p> <p>Dojos will be awarded for children who are reading at home.</p> <p>Please ensure that reading is recorded in logs. Your child can write it in themselves if they wish.</p>



# Routines


**Water Bottle**  
Please ensure that your child has their water bottle with them each day. Please ensure it is clearly named.

**Snack**  
Please ensure that your child comes to school with a piece of fruit or vegetable or a cereal bar.  
  
Please also note that we are a **nut-free** school.

**Homework**  
The homework grid will be available through Google Classroom.  
  
I have also sent out a hard copy.  
  
Please submit your child's learning through GC or through the class email:  
  
[nz@stmarysprimarypulborough.co.uk](mailto:nz@stmarysprimarypulborough.co.uk)



# Homework

Topic	YEAR 3 HOMEWORK – AUTUMN TERM 2024 – RUMBLE IN THE JUNGLE and ROAD TRIP NZ					I AM GOING TO CHOOSE...
<b>Literacy and Communication</b>  <b>(YOU MUST DO AT LEAST TWO OF THESE EACH HALF-TERM)</b>	<b>Information Text</b> Choose a rainforest animal to research and present what you know about them. Include what it eats, where in the rainforest it lives, how it survives (e.g. does it camouflage? Is it a predator?) and any interesting facts.	<b>Diary Entry</b> Write a diary or journal entry pretending you are on a journey through the rainforest. Remember to describe what you might see and hear, and how you might have felt along the way!	<b>Debate</b> Should tigers be kept in captivity? Present your reasons for and reasons against tigers being kept in captivity as you like e.g. in a table, as a thought shower.	<b>Author</b> Who is your favourite author? What books has he/she written? What do you like about their books? Can you find some interesting facts about this author?	<b>Extreme Reading</b> Ask an adult to take a photo or you reading in an interesting or unusual place. This could be reading under your bed or on a climbing frame – wherever your imagination takes you! Obviously it needs to be somewhere safe. What book are you reading? Write a book review to go with the photo.	1. 2. 3. 4.
<b>Maths and Problem Solving</b>  <b>(YOU MUST DO AT LEAST TWO OF THESE EACH HALF-TERM)</b>	<b>Jungle Word Problems</b> Choose one or more of the four operations ( $+$ - $\times$ $\div$ ) that we will cover in class this term. Write some one or two step Jungle themed word problems. Present your word problems on cards to be added to our Maths Challenge area. Can you produce your own answer sheet?	<b>Animal measurements</b> Find out the length/height of at least 5 different rainforest animals and order them from smallest to largest.	<b>Shape i-Spy...</b> Interesting shapes are in the house, in the streets and everywhere on your travels. Some shapes can be found everywhere and are easier to find than others. Whether you are out and about, in the car or around the house, try and find examples of different shapes. For example, photographs, drawings, magazine/newspaper cuttings. 	<b>Rainforest Top Trumps</b> Make a set of rainforest animal themed top trump cards. Your top trumps can include two, three or four-digit numbers. When you have completed your game, play it with a member of your family. Remember to practice reading the numbers aloud and writing them in words.	<b>TT Rockstars</b> Complete 6 TT Rockstars Sessions.  Date:  Date:  Date:  Date:  Date:	1. 2. 3. 4.
<b>Science and the outside environment</b>  <b>(YOU MUST DO AT LEAST ONE OF THESE EACH HALF-TERM)</b>	<b>Endangered Animals</b> Choose an endangered animal to find out about. Choose how to present the information you have collected.	<b>Invertebrates</b> Make a careful and accurate observational drawing of an invertebrate found in the local environment.	<b>Electricity Dangers</b> Think about dangers of electricity in the home. Design a poster to warn of the dangers of electricity in the home.	<b>Electrical Appliances</b> Look around your house and list as many electrical appliances as possible. You could take photos of these. Remember to write down what the electricity makes them do, and if possible, how it works. How would your day be without these electrical appliances? You can choose how to present this information e.g. a piece of writing, a comic strip or a poster – be creative!		1. 2.
<b>Humanities, Citizenship and Art</b>  <b>(YOU MUST DO AT LEAST ONE OF THESE EACH HALF-TERM)</b>	Find out where in the world rainforests are located. Choose one rainforest to research and present some facts about it in a format of your choice.	Create a piece of artwork showing a plant or animal that lives in the rainforest. You can choose which materials to use for your artwork, e.g. paints, pencils, pastels, collage.	Research which food produces come from the rainforest. Compare these to the foods you might see growing typically in the UK. Describe similarities and differences between them.	Research a state in the USA or an historical event in the USA. Produce a poster or a PPT presentation to share with the class.		1. 2.

# Behaviour

Positive behaviour management			
Lots of praise!	End of week certificates -	Badges -	Head teacher awards
Verbal and rewards - dojos and stickers.	Dojo champion Star of the week	Bronze, Silver and Gold.	Recognition in newsletter - vine leaves

# Behaviour continued

Behaviour management			
We must follow our Golden Rules. These are up in the classroom and are often referred to.	If your child does not follow the Golden Rules, they will lose minutes from their break or lunch time.	This will result in a conversation with me in person or over the phone.	If your child continues to disregard the Golden Rules, there will be a meeting with me and a member of the Senior Leadership Team.

# Key dates and Questions?

Key dates:

October	November	December
1st - Meet the teacher 15 <sup>th</sup> - Marwell Zoo trip 18 <sup>th</sup> - School Photos 21 <sup>st</sup> & 23 <sup>rd</sup> October - Parents' Evenings 25 <sup>th</sup> Oct - INSET Day Half Term - Mon 28 <sup>th</sup> Oct - Fri 1 <sup>st</sup> Nov	Monday 4 <sup>th</sup> November - Return to school after half term.	December 4 <sup>th</sup> - Celebration Assembly.

